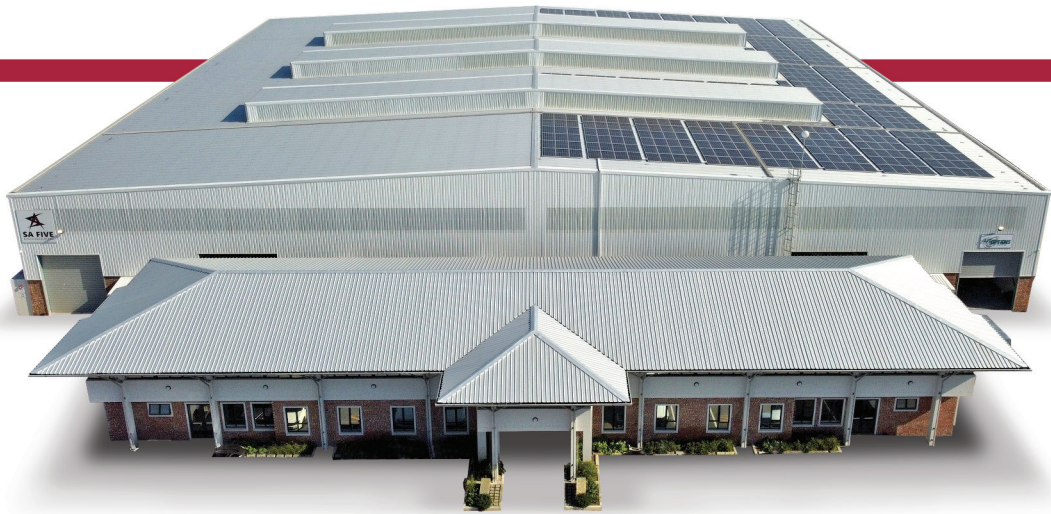


NEW FACILITY



SA FIVE ENGINEERING (PTY) LTD RECENTLY MOVED TO OUR NEWLY BUILT AND UPGRADED PREMISES
Corner of Range and School Road, Blackheath, Cape Town.

12 000 SQUARE METERS FULLY EQUIPPED WITH OVERHEAD CRANES

Our new workshop facilities are state-of-the-art, to the extent of 12 000 square meters and are fully equipped with overhead cranes (7M under hook), cold cutting, plasma profiler, rolling, drilling, cropping and welding machines. In addition thereto, our laydown area, to the extent of 8 500 square meters, allows fabrication and storage of significant sized structures.

Our workshop facilities enable us to produce work at competitive prices, whilst always maintaining our high degree of quality. Sliding doors enable the fabrication of different metals (stainless steel and duplex) to place in isolated environments, with zero cross-contamination.

SA Five Engineering is proud of our advanced workshop facilities and excited about the opportunities that lay ahead to serve our clients and future projects.

